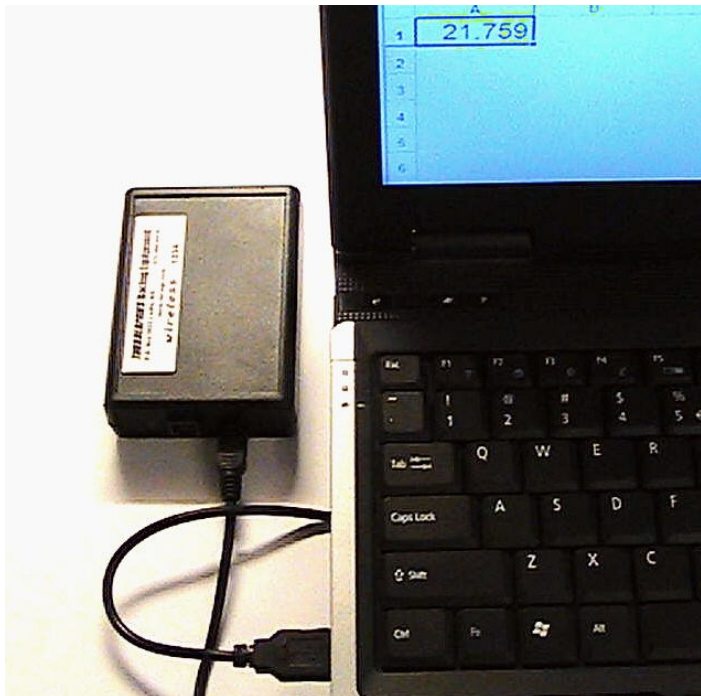


Wireless PC Interface for the Sport Timer 3000

**Interface unit, USB port cable to PC
Pawsoft interface software, 30 day free trial copy**

**Installation and Operating Manual
Version 1**



(shown connected to PC laptop and Excel spreadsheet, not included)

Distributed By:

THUNDERPAWS Racing Equipment
P.O. Box 3033
Leslie, MO 63056
573-484-0030
support@raceqp.com
www.raceqp.com

Wireless PC Interface

Receives wireless time data from the Sport Timer 3000 and sends to a USB port on a Windows PC or laptop.

Thank you for purchasing the PC Interface. Now you can get times instantly and accurately recorded on your PC. Connects to any USB data port, self-contained, powered by the USB port, includes internal antenna for long range wireless communication with the Sport Timer Controller. Makes your timing and scoring easy and error-free. Please check the shipping box to make sure all components on your order were received undamaged:

Wireless PC Interface unit, USB cable, software and drivers.

NOTE: This Free Trial Version Software is fully functional for a period of 30 days from the date of the original installation. It must be licensed after that to continue to function.

Getting started with the Installation:

Hardware Installation

Insert the small end of the supplied USB cable into the socket in the end of the PC Interface unit. Insert the large end of the cable into an unused USB port of your Windows PC or laptop. Start up your computer and open your favorite word processor, notepad or spreadsheet application where the times will be written.

Software

USB Virtual COM Port software drivers are included for Windows versions from XP(SP2) through Windows 8. Also included, Pawsoft Interface software that "types" the times received by the Interface wherever the PC cursor is placed.

You can download the Windows Installation program, including driver installation, at: <http://www.raceqp.com/download/PAWsetup.zip>

Technical Note: Any software program can be used on any operating system to receive the raw data from the Interface at a USB port, as long as the appropriate USB Virtual COM Port driver is installed. Go to <http://www.ftdichip.com/FTDrivers.htm> if you need a different driver for your operating system and/or software. Contact us for information about the data format.

Windows Installation

Insert the Installation CD and the installation should start up automatically. If it does not start by itself, go to the CD in Explorer and double-click the **setup.exe** file to start the installation. If you have the downloaded/zipped version, unzip the download in a convenient folder and double-click the **setup.exe** file to start the installation.

Follow these examples in order below to proceed through the installation:

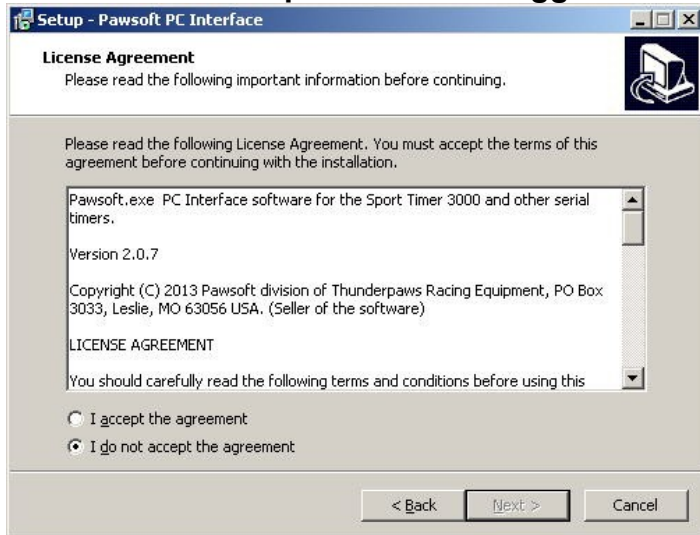
1. Choose your language for installation



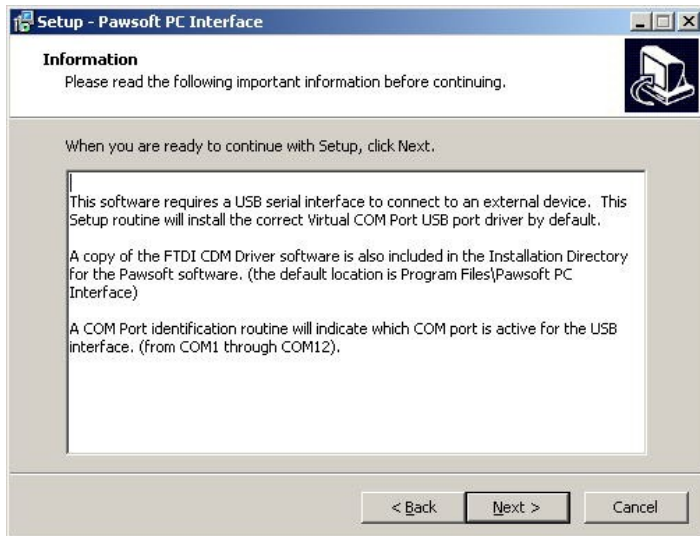
Let's get started!



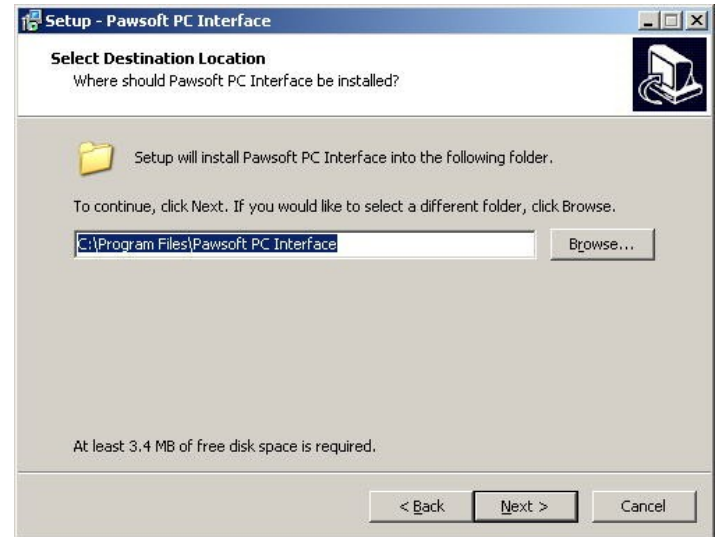
2. Read and accept the License Agreement



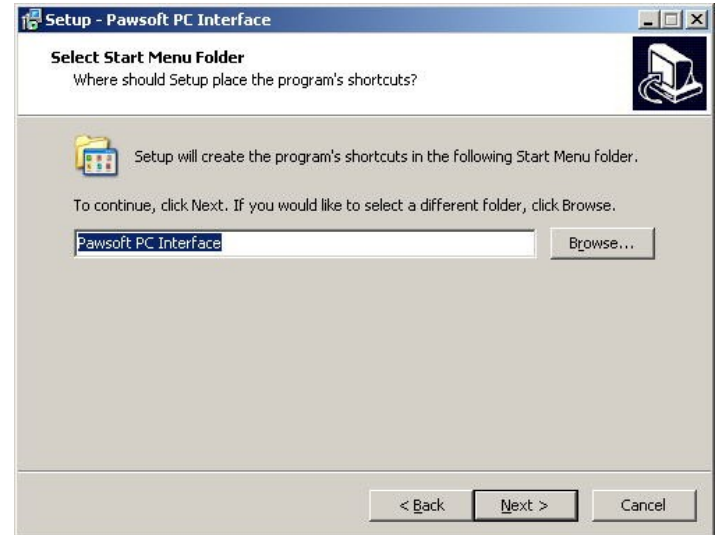
3. Information about USB and COM Ports



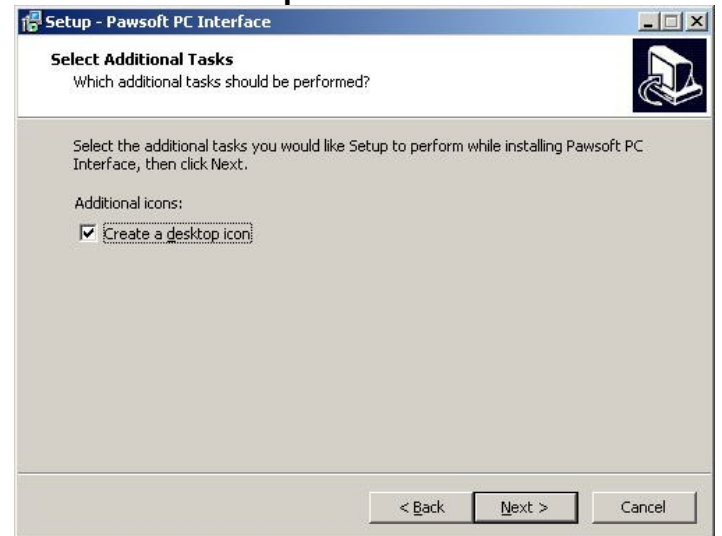
4. Select destination folder



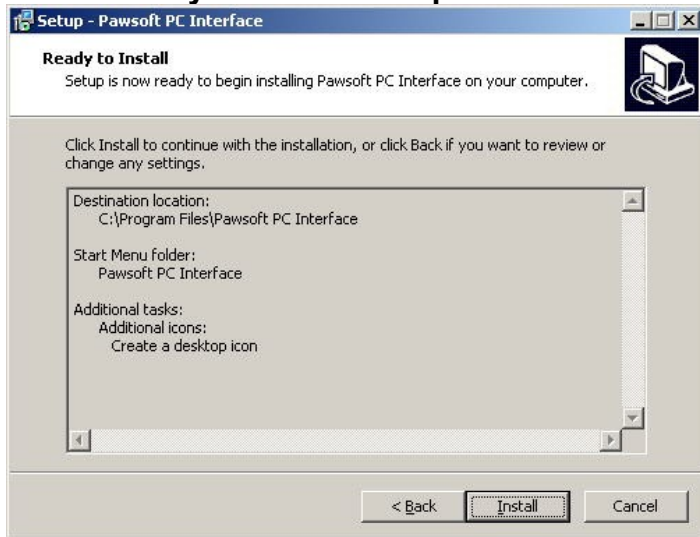
5. Select Start Menu folder



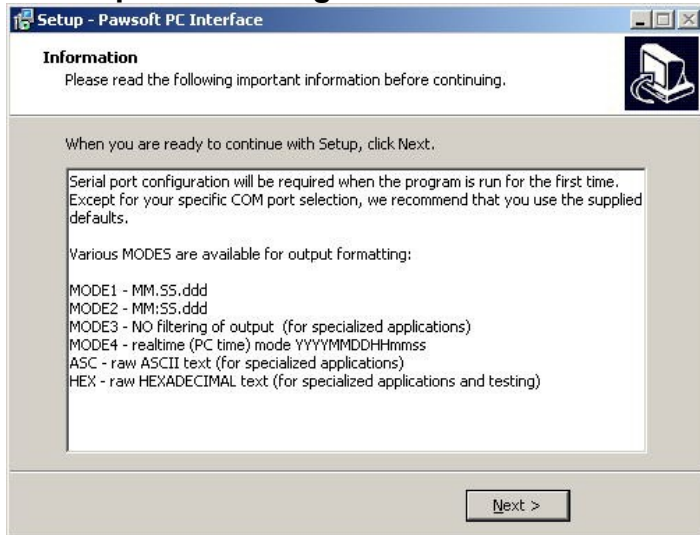
6. Create Desktop Icon



7. Summary of Installation parameters



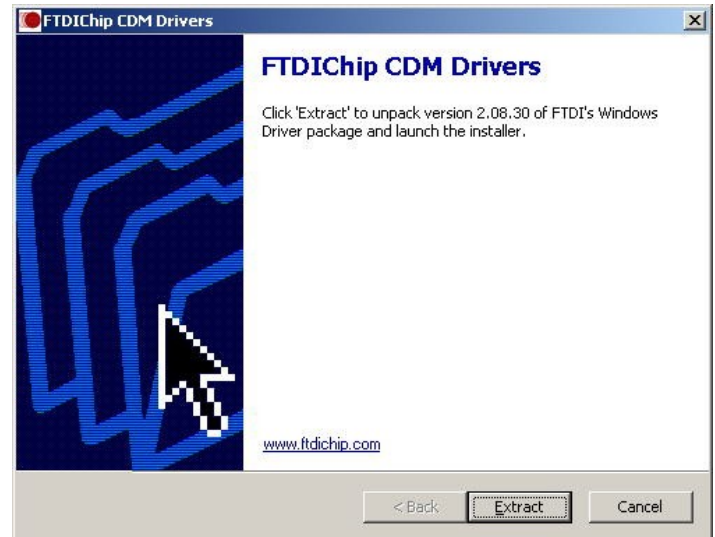
8. Output formatting MODES



9. Install driver and show COM Port number



10. Install driver



11. Show Port Number – Make a note of this.



Software and driver Installation is now complete.

PAWSOFT Software Configuration

Now you are ready to set up your application.

NOTE: This Free Trial Version is fully functional for a period of 30 days from the date of the original installation. It must be licensed after that to continue to function.

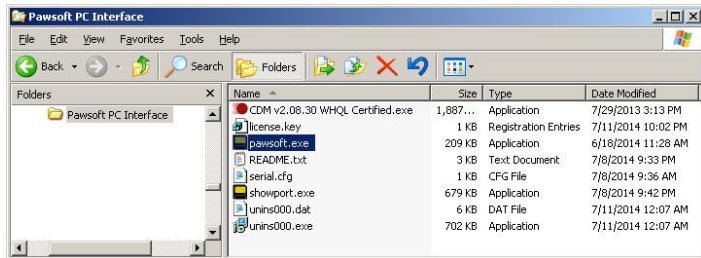
Startup

Double-click the Pawsoft PC Interface icon on your desktop or RUN the pawsoft.exe application from the installation directory.



CLICK THE ICON:

Or RUN THIS:



Startup Screen:



NOTE: This screen shows Registered to: **Evaluation Copy**. This means that the software has not been licensed for Unlimited Use and will cease to function after the **Expiration** date shown.

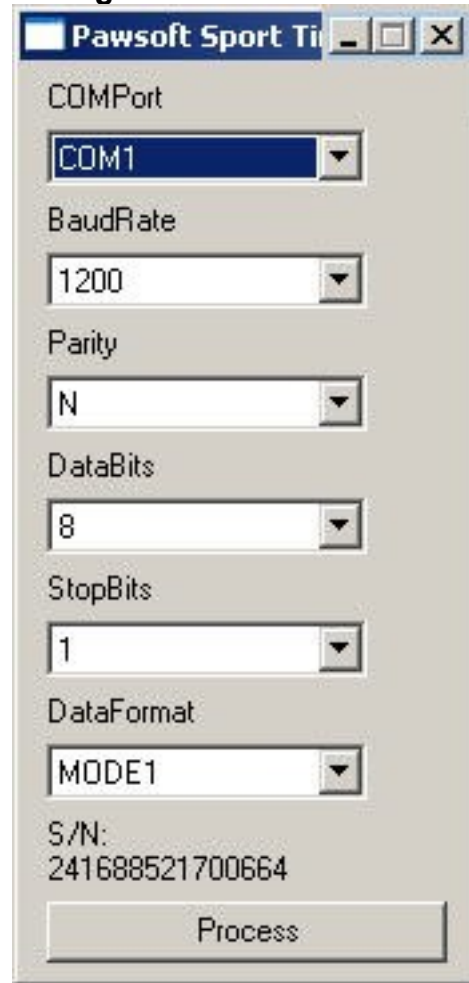
Configuration

Since this is the first time the software has been run, the configuration settings must be entered. You will normally be required to do this only once when you first install the software.

Start the Configuration:



Configuration Screen:



COMPort

Drop down and Select the COM Port that was shown during Installation

BaudRate, Parity, DataBits and StopBits

Should be left as they are set unless you are supporting a special or custom application.

DataFormat

The format of the data sent to your PC can be changed to provide the proper format for your application or software. Please contact us if you have any questions about which format to choose.

MINUTES = mm SECONDS = ss DECIMAL SECONDS = ddd
YEAR = YYYY MONTH = MM DAY = DD HOUR = HH

MODE1 Times shown as sss.ddd (each minute = 60 seconds)

MODE2 Times shown as mm:ss.ddd

MODE3 Times exactly as displayed on the Sport Timer

MODE4 Realtime MODE - YYYYMMDDHHmmss

ASC Raw ASCII text mode. For specialized applications

HEX Raw Hexadecimal mode. For specialized applications

S/N

The unique Serial Number for your Pawsoft Software. You need this to obtain a license key for Unlimited Use.

Press the **PROCESS** button when you are finished.

PAWSOFT Software Operation

Now you are ready to run up your application.
Make sure the USB cable is plugged in

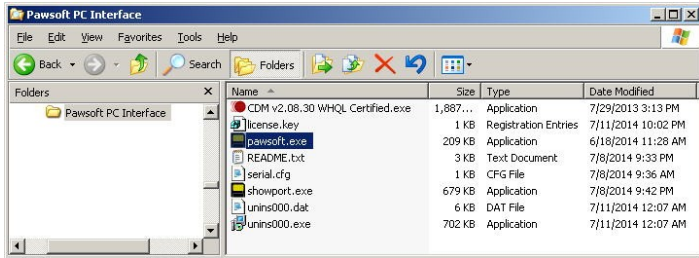
Startup

Double-click the Pawsoft PC Interface icon on your desktop or RUN the pawsoft.exe application from the installation directory.



CLICK THE ICON:

Or RUN THIS:



Startup Screen (click OK):



COM Port test (click OK):



Cursor location select(click OK):



Receiving times from the Sport Timer

ANY Windows application that allows typing from the keyboard will accept the times sent by the Sport Timer PC Interface at the location of the Windows cursor. For example:

WORD PROCESSOR (Microsoft Word, etc.)

TEXT PROCESSOR (Notepad, etc.)

SPREADSHEET (Excel, etc.)

DATABASE (Access, etc.)

Event management software (CharlyHorse, etc.)

1. Start your software application
2. Click the cursor where you want times to be inserted.
3. Times from the Sport Timer will be "typed" at the cursor location as they come in wirelessly from the PC Interface.
4. In any MODE except HEX, the cursor will move to the next line or the next cell after inserting a time

Shutdown Pawsoft software

The Pawsoft Icon will appear in the status line whenever the software is running.

Press CTRL F1 to shutdown Pawsoft software:



Or, unplug the USB cable and the software will disconnect from the COM Port and shutdown the software.

Additional functions while the software is running

Press CTRL F10 to re-run Serial Port Configuration

Press CTRL F4 to enter your License Key for Unlimited Use (see below for detailed steps).

PAWSOFT Software Unlimited Use License

This Free Trial Version Software is fully functional for a period of 30 days from the date of the original installation. A License Key must be purchased after that to continue to function.

You will need your 15-digit Serial Number from the Startup screen to obtain the correct License Key.

Go to <http://www.raceqp.com/PAWlicense.html> To purchase your Unlimited Use License online for \$49.95. Payment by any major credit or debit card or your PayPal account.

You can also contact us at: thunderpaws@raceqp.com or call: 573-484-0030 to purchase an Unlimited Use License.

1. Start the Pawsoft application as normal
2. Press CTRL F4 for License Key Screen



3. Carefully enter your 15-digit License Key
4. Enter your name as Registered Owner
Press the PROCESS button

If your software has already expired, you will be taken to the License Key entry screen when you start it up.

PAWSOFT Software – Technical Support

For Technical Support scan this for FAQs and a list of Instructional Videos, or go to:

<http://www.raceqp.com/olhelp01.html>



RECORD OF PURCHASE

The Wireless PC Interface Hardware is fully warranted to the original purchaser against any defects in workmanship for one year from the date of purchase from an approved Dealer. This warranty does not cover physical damage & will be voided if any attempt has been made to remove the sealed covers on the unit. It is not necessary to register your warranty, your receipt from the reseller will be considered the start date of your warranty.

Interface Serial Number _____

Software Serial Number _____

License Key _____

Purchase Date _____

Purchased from:

Dealer _____

Address _____

City _____ State/Prov. _____ Zip/PC _____

Should our products require service and to assure prompt repair, please call or contact our Support Line for instructions and if instructed, package the unit in a secure container with proof of purchase. If return is required we will provide return address information when you contact us as hardware and software warranty support may be provided from different locations depending upon the problems.

Your Dealer is NOT equipped to support our Products

For Technical Support or Repairs

**Please Call
573-484-0030**

Or contact:

THUNDERPAWS Racing Equipment

P.O. Box 3033

Leslie, MO 63056

573-484-0030

support@raceqp.com

www.raceqp.com

Except as provided herein, we make no express warranties and any implied warranty of merchantability or fitness for a particular purpose is limited in its duration to the duration of the written warranty set forth herein.

Except as provided herein, we shall have no liability or responsibility to the purchaser or any other person or entity with respect to any liability, loss or damages caused or alleged to be directly or indirectly by use of this product, including, but not limited to, any incidental or consequential damages.

Some states or countries do not allow the limitation or exclusion of incidental or consequential damages or limitations on the length of implied warranties; therefore, the aforesaid limitations or exclusions may not apply to you. This warranty gives you specific legal rights and you may also have other rights, which vary from state to state.